

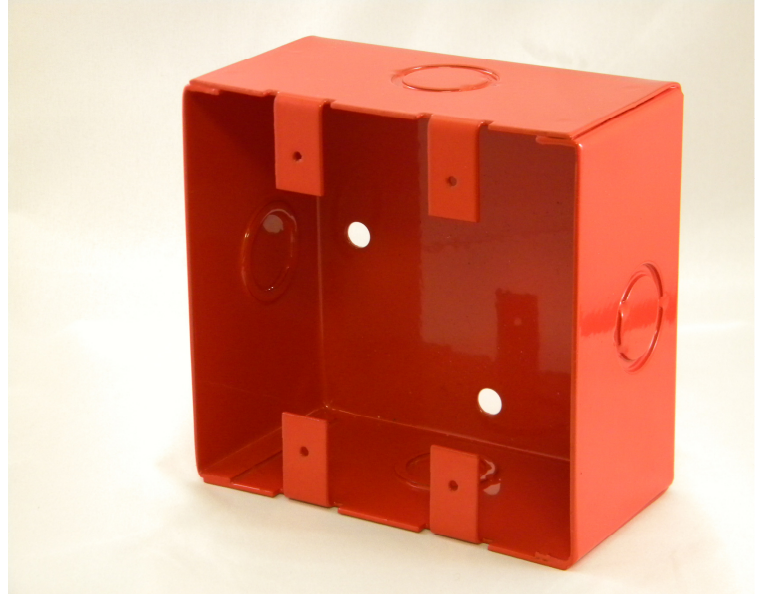
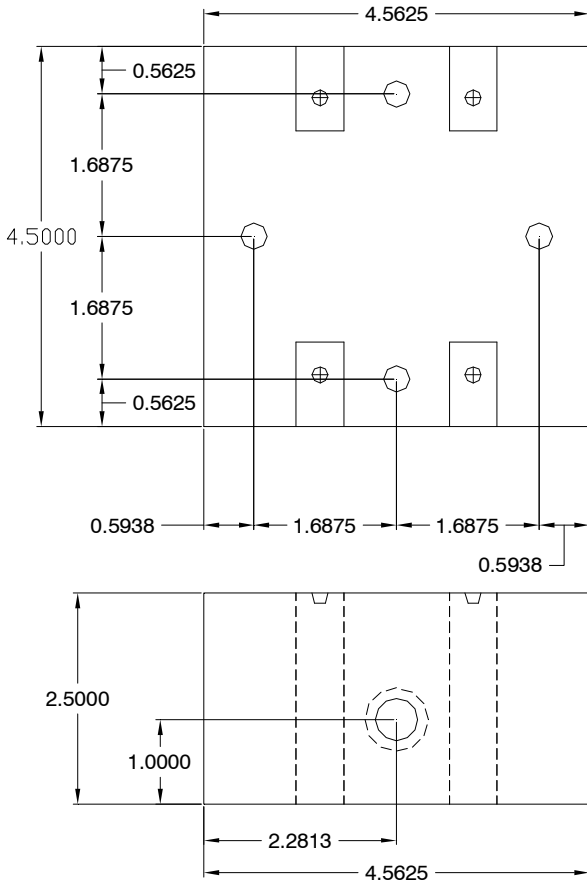
2 GANG RED BACK BOX

Effective May 2010

PART# GEM 2GRB

page 1 of 1

Dimensions



Features

- Extra deep box 2.5"
- Red color for Fire Alarm
- 16 gauge steel
- 1/2" and 3/4" knockouts

The Gemcom Surface Mount Back Box is a great solution for installing any of Gemcom's 2 Gang Switch Assemblies for a clean surface installation. The Back Box comes with 4 mounting holes and pre-tapped holes for installation of 2 Gang Switch Assemblies.

The Back Box is painted red, 2-1/2" deep, and comes with (4) 1/2" and 3/4" combination knockouts.

This literature is provided for informational purposes only. Gemcom, INC. assumes no responsibility for the product's suitability for a particular application. The product must be properly applied to work correctly. If you need more information on this product, or if you have a particular problem or question, contact GEMCOM, INC., WILLOW SPRINGS, IL 60480. Telephone: (708) 839-6840